

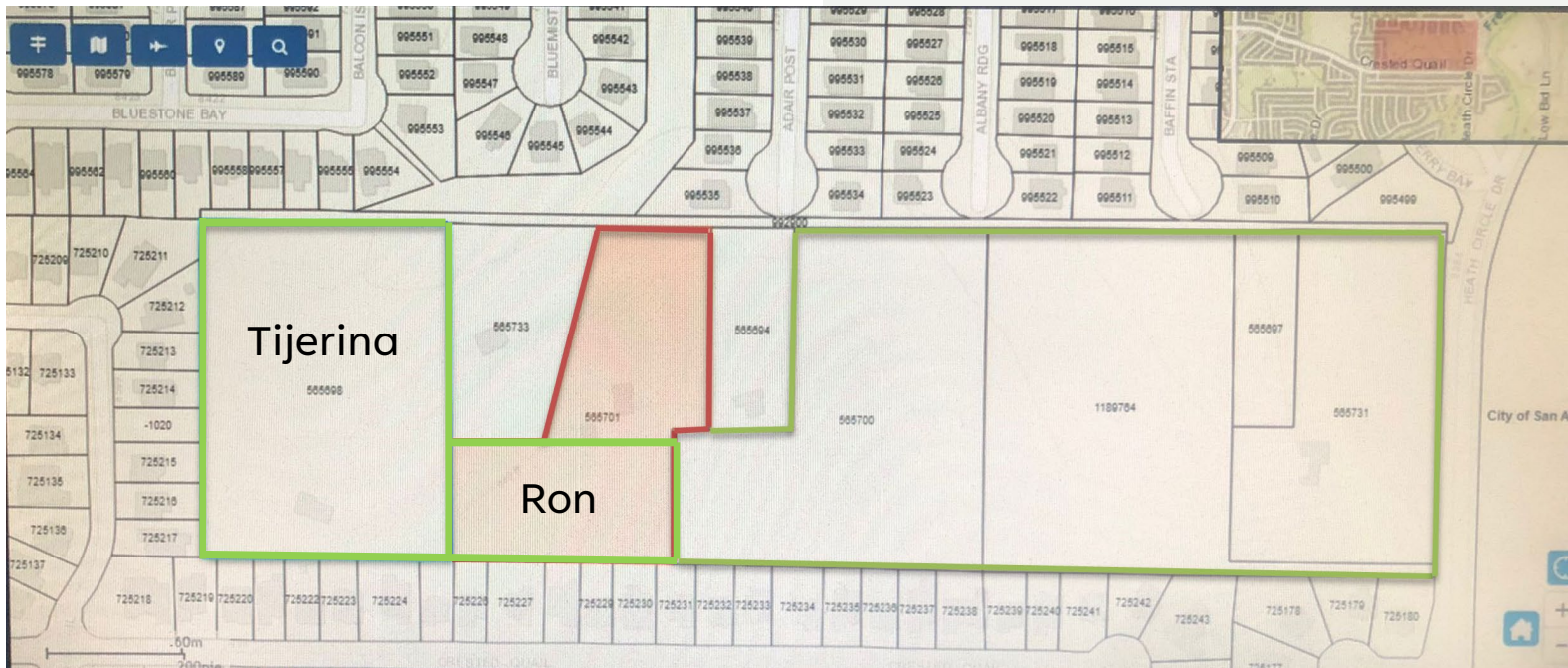


# Heron Valley

San Antonio, TX.

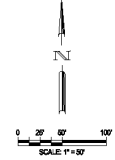
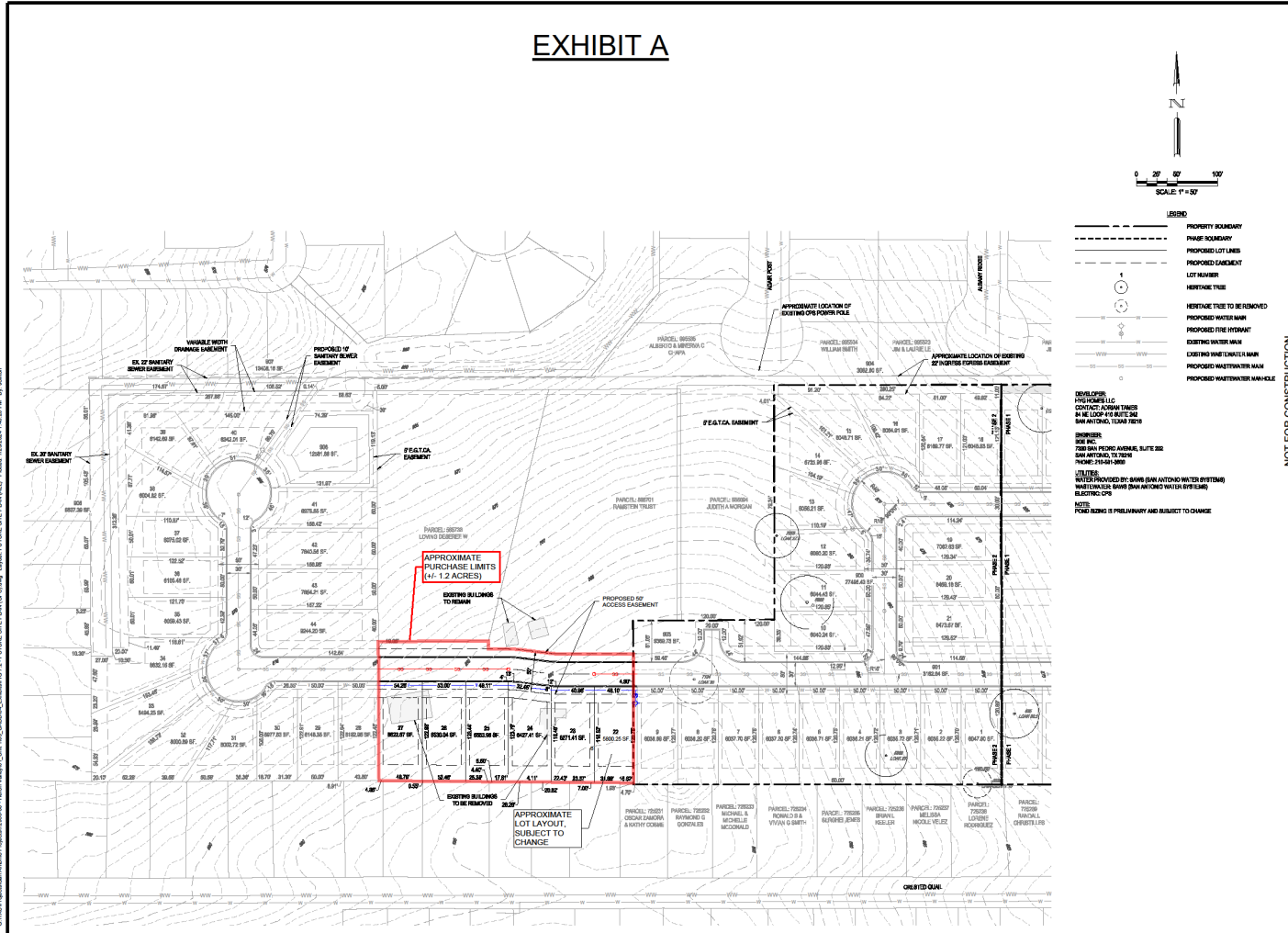
Diciembre 2024

# Compra de los terrenos “Tijerina” y “Ron”



# Terreno Ron

## EXHIBIT A



- LEGEND**
- PROPERTY BOUNDARY
  - - - - - PAST BOUNDARY
  - PROPOSED LOT LINES
  - - - - - PROPOSED EASEMENT
  - LOT NUMBER
  - NETWORK TIE
  - HERITAGE TREE TO BE REMOVED
  - PROPOSED WATER MAIN
  - PROPOSED FIVE INCH WWT
  - EXISTING WATER MAIN
  - EXISTING FIVE INCH WWT
  - PROPOSED WATER MAIN
  - PROPOSED WATER MAIN MANHOLE

**DEVELOPER:**  
**PROGRESS LLC**  
 CONTACT: ALAN THOMAS  
 8400 LOCK HAVEN DRIVE, SUITE 200  
 SAN ANTONIO, TEXAS 78261  
 PHONE: 214-940-0888

**DRAWN BY:**  
 JDC

**UTILITIES:**  
 METERS PROVIDED BY SAN ANTONIO WATER SYSTEMS  
 WATERVALVE SAWS SAN ANTONIO WATER SYSTEMS  
 ELECTRIC UPS

**NOTES:**  
 FORMING IS PRELIMINARY AND SUBJECT TO CHANGE

NOT FOR CONSTRUCTION

DATE	1/14/2024
DESIGNED BY	JDC
REVIEWED BY	JDC
DRAWN BY	JDC
CHECKED BY	JDC
DATE	1/14/2024
DESIGNATION	CONSTRUCTION

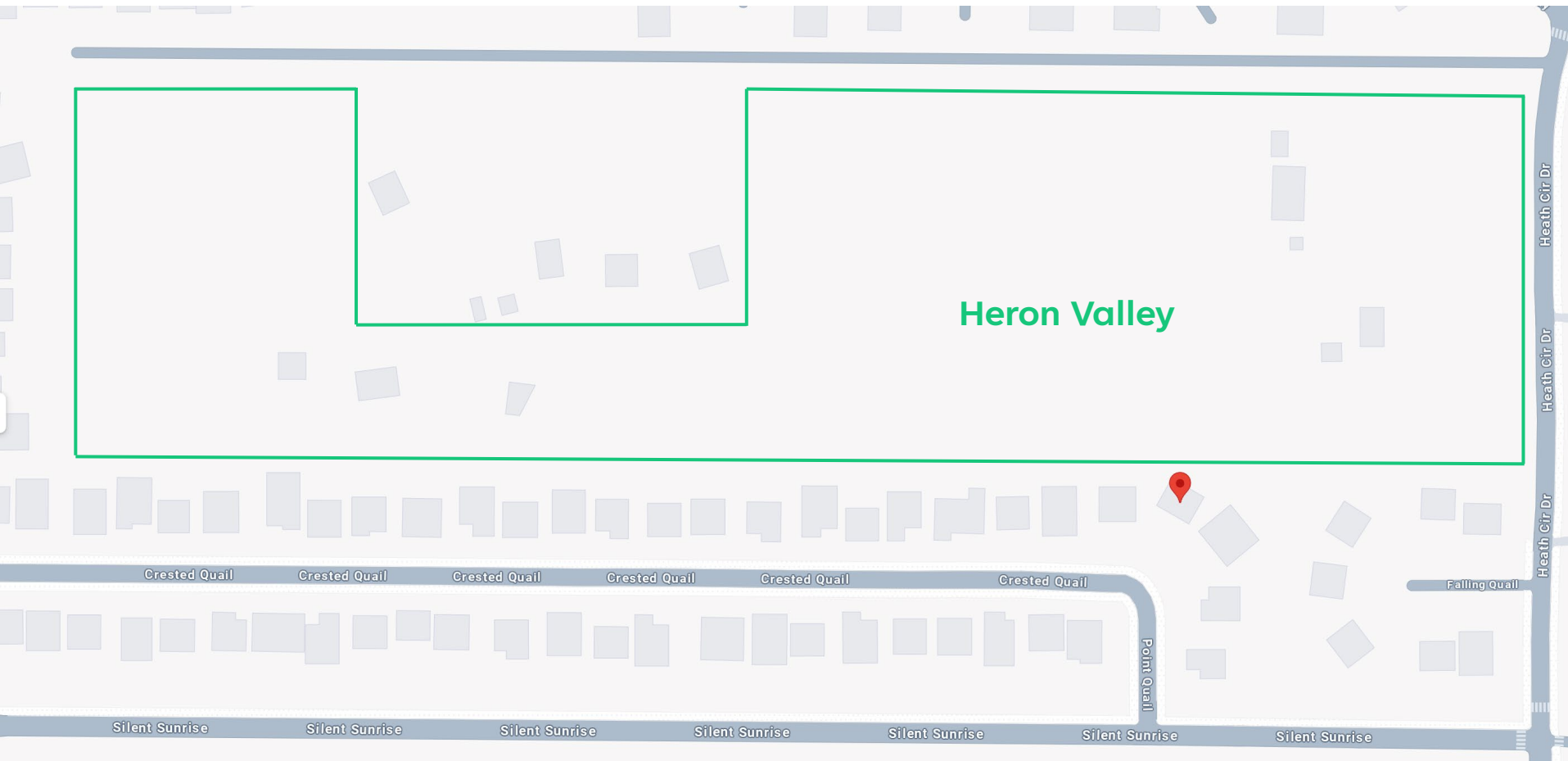
**HERON VALLEY**

FUTURE SITE PLAN

SHEET  
 FIG 7.3

This Document is Prepared Under The Authority of Alan Thomas, P.E. Texas Licensed Professional Engineer 11460. For Internal Review Purposes Only. Revision No. 1-104

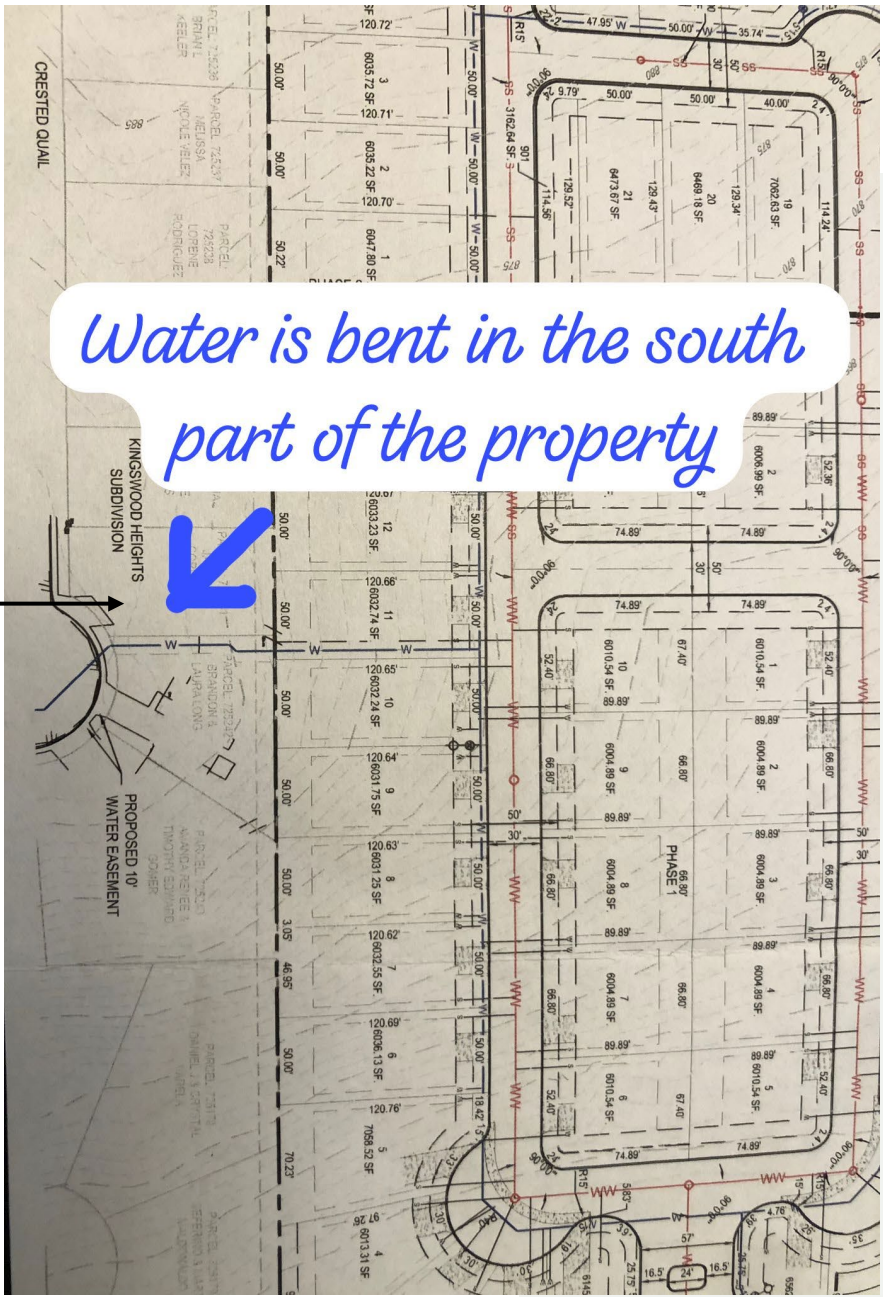
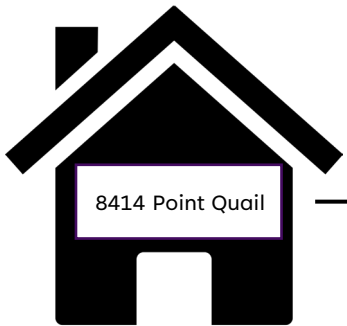




\*Compra de la casa 8414 Point Quail, para hacer la conexión de agua en la parte sur del Proyecto.

\*Permiso de SAWS aprobado





*Water is bent in the south part of the property*



# Welcome to the City of San Antonio

[Announcements](#) [Register for an Account](#) [Reports \(9\) ▾](#) [Login](#)

[Create an Escrow Account](#) | [Amend Escrow Account\(s\)](#)

24-11800389

[Home](#) [Land Development](#) [Building](#) [Profile](#) [Fire](#) [Code](#)

Search Applications

**Record LAND-PLAT-24-11800389:**  
**Major Plat**  
**Record Status: Additional Info Required**  
**Expiration Date: 09/16/2026**

<a href="#">Record Info ▾</a>	<a href="#">Payments ▾</a>	<a href="#">Conditions 3</a>
-------------------------------	----------------------------	------------------------------

A notice was added to this record on 09/06/2024.  
Condition: Indicated Corporate Account Severity: Notice  
Total Conditions: 3 (Notice: 3, Met: 2)

[View Condition](#)

*We understand how important customer service is and our employees are here to assist you and to help make your experience with our department a positive one. Go to Record Info / Processing Status to locate the employee(s) currently reviewing your application. Please feel free to reach out to one our team members if you any questions or concerns.*

**DSD E-MAIL AND PHONE CONTACT INFORMATION (PDF)** ([Link to: https://www.sanantonio.gov/DSD/About/Employees](https://www.sanantonio.gov/DSD/About/Employees))

## City of San Antonio



## Processing Status

- ✔ ▶ Application Intake
- ✱ ▶ Application Completeness
- ✔ ▶ Completeness Review - SAWS
  - Completeness Review - Bexar County
- ✔ ▶ Completeness Review - Office of Historic Preservation
- ✔ ▶ Completeness Review - CPS Energy
- ✔ ▶ Completeness Review - Parks and Recreation
- ✔ ▶ Completeness Review - Addressing
- ✔ ▶ Completeness Review - Subdivision
- ✔ ▶ Completeness Review - TCI - Storm Water
- ✔ ▶ Completeness Review - GIS
- ✔ ▶ Completeness Review - Engineering Street Lights
- ✔ ▶ Completeness Review - Engineering TIA
- ✔ ▶ Completeness Review - Engineering Streets
- ✔ ▶ Completeness Review - Engineering Trees
- ✔ ▶ Technical Review - SAWS USA
- ✔ ▶ Technical Review - SAWS Water Quality
- ✔ ▶ Technical Review - SAWS Sewer
- 🕒 ▶ Technical Review - SAWS Water
  - ▶ Technical Review - SAWS Aquifer
  - ▶ Technical Review - Bexar County - Traffic
  - ▶ Technical Review - Bexar County - General Platting
  - ▶ Technical Review - Bexar County - OSSF
  - ▶ Technical Review - Bexar County - SD
  - ▶ Technical Review - Bexar County - Flood Plain
- ✔ ▶ Technical Review - Office of Historic Preservation
- ✔ ▶ Technical Review - CPS Energy
- 🕒 ▶ Technical Review - Parks and Recreation
- ✔ ▶ Technical Review - Addressing
- ✔ ▶ Technical Review - Subdivision
- ✔ ▶ Habitat Completeness Review
- ✔ ▶ Technical Review - TCI - Storm Water
- ✔ ▶ Technical Review - GIS
- ✔ ▶ Technical Review - Engineering Street Lights
- ✔ ▶ Technical Review - Engineering TIA
- 🕒 ▶ Technical Review - Engineering Streets

City of San Antonio



- ✓ ▶ **Technical Review - Engineering Trees**  
SAWS - Letter of Certification  
Bexar County - Letter of Certification
- ✓ ▶ **Office of Historic Preservation - Letter of Certification**
- ✓ ▶ **Technical Review - CPS Design**
  - ▶ **Technical Review - CPS Right of Way**
  - ▶ **Parks and Recreation - Letter of Certification**
  - ▶ **Technical Review - DSD - TIA**
- ✓ ▶ **CPS Energy - Letter of Certification**  
DSD - Letter of Certification  
**Plat Approval Completeness Review**  
Final Review - CPS Energy  
**Final Review - Parks and Recreation**  
Final Review - Office of Historic Preservation  
**Final Review - SAWS USA**  
Final Review - SAWS Water Quality  
**Final Review - SAWS Aquifer**  
Final Review - SAWS Water  
**Final Review - Engineering Trees**  
Final Review - Engineering Streets  
**Final Review - Engineering TIA**  
Final Review - GIS  
**Final Review - Subdivision**  
Final Review - Addressing  
**Final Review - SAWS Sewer**  
Final Review - Bexar County - Traffic  
**Final Review - Bexar County - General Platting**  
Final Review - Bexar County - Flood Plain  
**Final Review - Bexar County - OSSF**  
Final Review - Bexar County - SD  
**Final Review - TCI - Storm Water**  
Final Review - Engineering Street Lights  
**Planning Commission Meeting**  
Bexar County Commissioners Court  
**Fees Due**  
Hold Review  
**Plat Recordation**  
Closure

## City of San Antonio





# Notas:

- Estamos en plática con los urbanizadores para ver si es posible hacer la conexión de agua en la parte Norte por el Cul-de-sac casa de Elena Akimova en lugar de hacerla por fuera de la colonia.
- Tambien se planea hablar con KB Homes para conseguir su autorización de pasar la conexión por su propiedad.
- Estamos en espera de las nuevas cotizaciones de los urbanizadores considerando la conexión de agua en la parte sur por la casa de Point Quail.



## Cul-de-sac Casa Elena Akimova

*Posible conexión en la parte norte de agua y drenaje*

- Agua
- Drenaje

