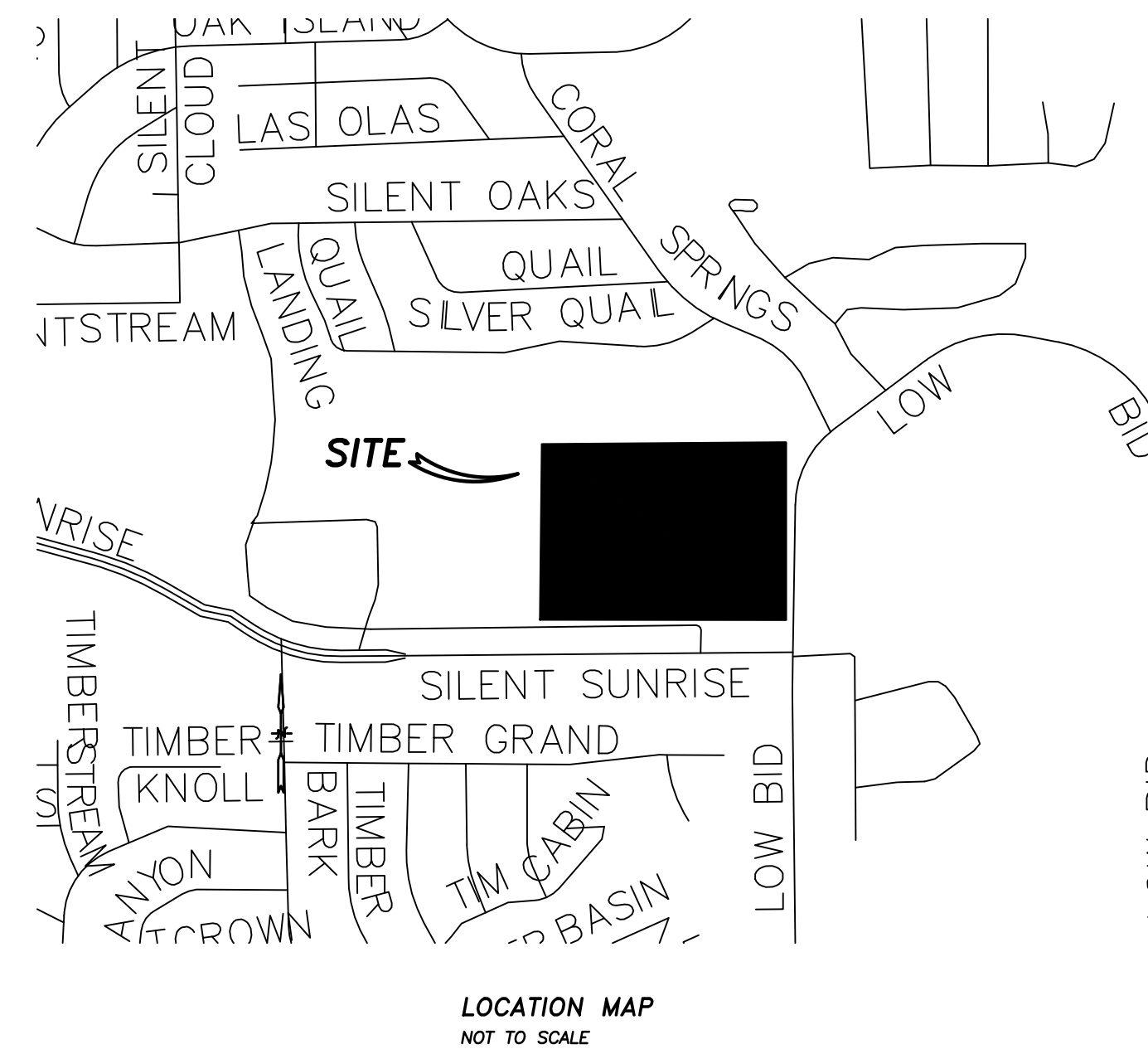


# HERON VALLEY CONSTRUCTION PLANS

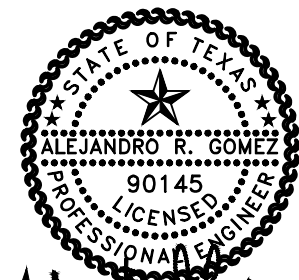


## INDEX OF DRAWINGS

SHEET	DESCRIPTION
1	COVER SHEET
2	GENERAL NOTES
3	STORMWATER POLLUTION PREVENTION PLAN
4	STORMWATER POLLUTION PREVENTION PLAN DETAILS
5	GRADING PLAN 1
6	TRAFFIC SIGN PLAN
7	SIDEWALK PLAN
8	STREET PLAN AND PROFILE - VIA PALERMO
9	STREET PLAN AND PROFILE - VIA PISA
10	STREET PLAN AND PROFILE - VIA VERONA
11	STREET PLAN AND PROFILE - VIA SALERNO
12	STREET PLAN AND PROFILE - VIA SIENA
13	STREET PLAN AND PROFILE - VIA PERUGIA
14	STREET STANDARD DETAILS
15	MISCELLANEOUS CONSTRUCTION STANDARDS I
16	CONCRETE DRIVEWAY STANDARDS
17	WHEEL CHAIR RAMP STANDARDS
18	TRAFFIC SIGN DETAIL
19	DRAINAGE AREA MAP
20	SANITARY SEWER COVER SHEET
21	SANITARY SEWER GENERAL NOTES
22	SANITARY SEWER DETAILS
23	SANITARY SEWER PLAN 1
24	SANITARY SEWER PLAN AND PROFILE - LINE "A"
25	SANITARY SEWER PLAN AND PROFILE - LINE "B"
26	SANITARY SEWER PLAN AND PROFILE - LINE "C"
27	SANITARY SEWER PLAN AND PROFILE - LINE "F"
28	WATER COVER SHEET
29	WATER GENERAL NOTES
30	WATER DETAILS
31	WATER DISTRIBUTION PLAN 1
32	UTILITY PLAN 1
34	
35	
36	
37	
38	
39	
40	
41	
42	
43	
44	
45	
46	
47	
48	
49	
50	
51	
52	
53	

Date: Aug 26, 2022, 1:02pm, User: JG, I:\SFP, File: C:\Users\JG\OneDrive\USA\220801\220825\_DWG File of plot 4-24-22 (1) (2) (1).dwg

3-08-2022



*Alejandro R. Gomez*

PROJECT ENGINEER:



**GOMEZ-GARCIA & ASSOCIATES, INC.**  
19230 STONE OAK PARKWAY, SUITE 302, SAN ANTONIO, TEXAS 78258  
(210) 832-9608 - (210) 832-9615 FAX  
TBPE FIRM REGISTRATION #5362

DEVELOPER:

**LECA CONSTRUCTION, LLC**  
17811 WILD BASIN, SAN ANTONIO, TEXAS 78258