

LEGEND

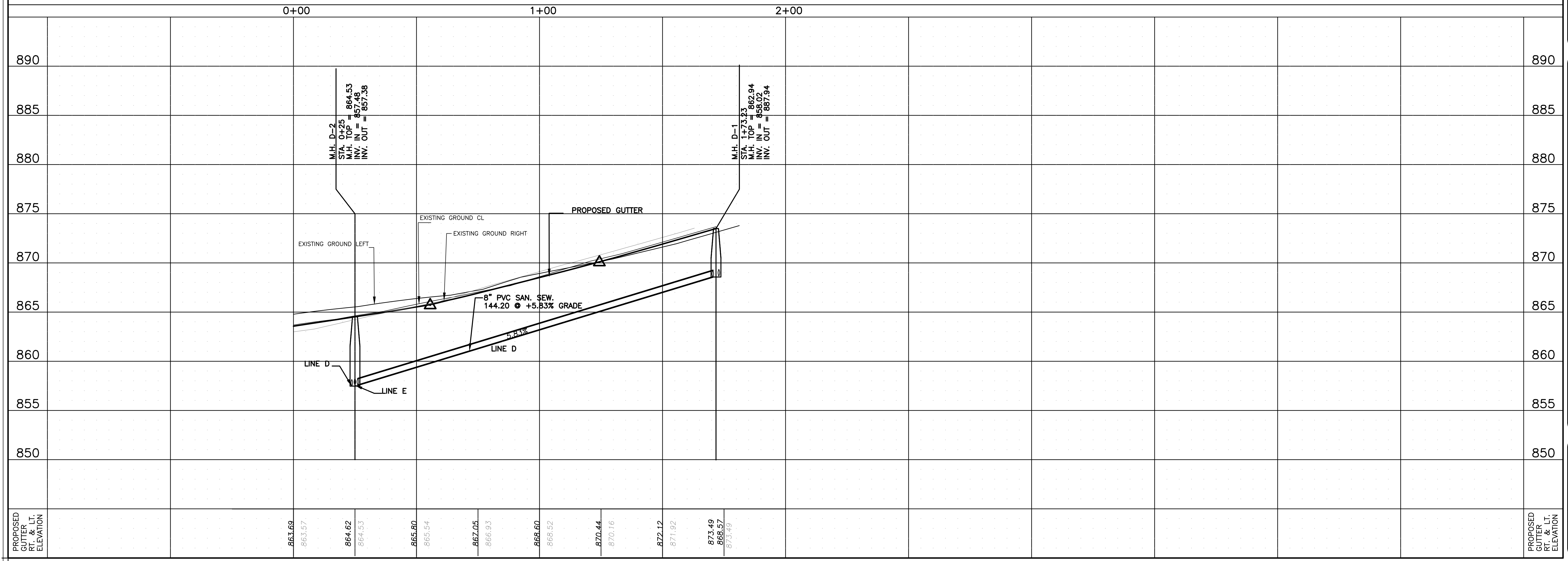
- PROPOSED WHEEL CHAIR RAMP
- HIGH POINT
- STREET CENTERLINE
- PROPOSED SIDEWALK
- WASHOUT CROWN
- PROPOSED FILL
- FLOW ARROWS

TRENCH EXCAVATION SAFETY PROTECTION

CONTRACTOR AND/OR CONTRACTOR'S INDEPENDENTLY RETAINED EMPLOYEE OR STRUCTURAL DESIGN / GEOTECHNICAL / SAFETY / EQUIPMENT CONSULTANT, IF ANY, SHALL REVIEW THESE PLANS AND AVAILABLE GEOTECHNICAL INFORMATION AND THE ANTICIPATED INSTALLATION SITE(S) WITHIN THE PROJECT WORK AREA IN ORDER TO IMPLEMENT CONTRACTOR'S TRENCH EXCAVATION SAFETY PROTECTION SYSTEMS, PROGRAMS AND/OR PROCEDURES FOR THE PROJECT DESCRIBED IN THE CONTRACT DOCUMENTS. THE CONTRACTOR'S IMPLEMENTATION OF THESE SYSTEMS, PROGRAMS AND/OR PROCEDURES SHALL PROVIDE FOR ADEQUATE TRENCH EXCAVATION SAFETY PROTECTION THAT COMPLY WITH AS A MINIMUM, OSHA STANDARDS FOR TRENCH EXCAVATIONS. SPECIFICALLY, CONTRACTOR AND/OR CONTRACTOR'S INDEPENDENTLY RETAINED EMPLOYEE OR SAFETY CONSULTANT SHALL IMPLEMENT A TRENCH SAFETY PROGRAM IN ACCORDANCE WITH OSHA STANDARDS GOVERNING THE PRESENCE AND ACTIVITIES OF INDIVIDUALS WORKING IN AND AROUND TRENCH EXCAVATION.

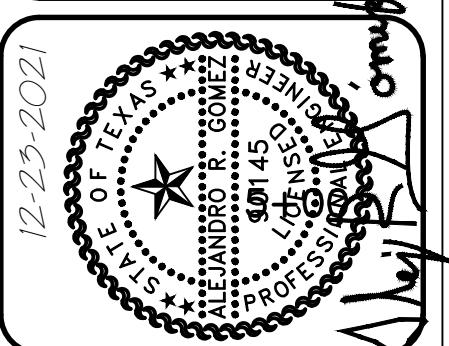
FLAMINGO ROAD PLAN

SCALE: 1" = 20'-0"



NO.	DATE	DESCRIPTION

**GOMEZ-GARCIA & ASSOCIATES, INC.**  
 19230 STONE OAK PARKWAY, SUITE 302, SAN ANTONIO, TEXAS 78258  
 (210) 832-9608 - (210) 832-9615 FAX  
 TBPE FIRM REGISTRATION #5362



HERON VALLEY II ENCLAVE  
 FLAMINGO ROAD  
 SANITARY SEWER PLAN AND PROFILE  
 LINE "D" STA. 0+00 TO 1+73.23

DESIGN	AG
DRAWN	LT
CHECKED	AG
DATE	SEPTEMBER 2022
JOB NO.	390.001
SHEET	?
OF	?

Date: Oct 26, 2022, 6:52pm User ID: USER  
 File: C:\Users\USER\Desktop\USA\PLANS\FINALES\FINAL II\221024\_DWG File of plot 4-24-22 (1) (2) (1) DRENAGE v-10.dwg